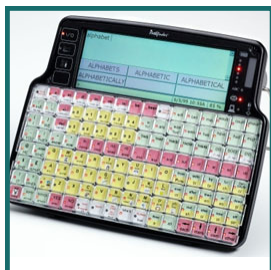


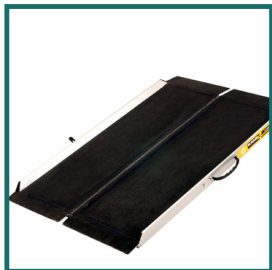
EXAMPLES OF ASSISTIVE TECHNOLOGY



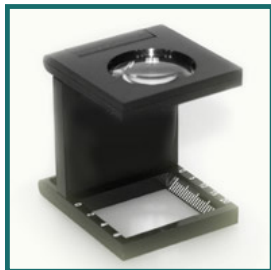
Wheelchair



Pathfinder™



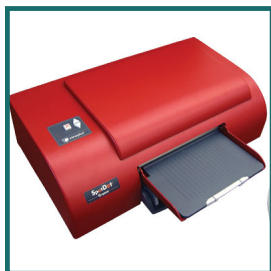
Portable Ramp



**Foldable Magnifying
Glass**



**Hearing Impaired
Travel Kit**



Braille Printer

An AT device may be as simple as an easy grip kitchen utensil or as complicated as a sophisticated voice recognition computer. AT devices and services may enable children and adults with disabilities to work, play, communicate, attend school, learn, move about, and be independent within the community.

Call or Visit GSAT!

Carla Torres
AT Specialist

Dolores Palomo
Center Assistant

University of Guam
Guam CEDDERS

Office of Academic & Student Affairs
UOG Station

Mangilao, Guam 96923

(V) Phone: 735-2490/1

TDD: 735-2491

Fax: 734-8378

Email: carla.torres@guamcedders.org

Website: www.gsatcedders.org



This brochure was produced with funding from the U.S. Department of Education,
Office of Special Education and Rehabilitation Services,
Rehabilitation Services Administration. Grant # H224A080053A

The University of Guam is an Equal Opportunity Employer and Provider.



**Enhancing Your
Quality of Life Through
Assistive Technology**





What is GSAT?

GSAT is a federal grant project funded by the Assistive Technology Act of 2004. The program is administered by the University of Guam Center for Excellence in Developmental Disabilities Education, Research and Service (CEDDERS).



Mission

GSAT's mission is to enhance the independence, productivity and quality of life for all Guamanians, through increased access and utilization of assistive technology (AT) devices and services.

What is Assistive Technology?

"...An **assistive technology (AT) device** is any item, piece of equipment or product system, whether acquired commercially off the shelf, modified, or customized, that is used to increase, assist, maintain, or improve the functional capacities of individuals with disabilities."

Assistive Technology services are any services that directly assist an individual with a disability in the selection, acquisition, or use of an AT device." (P.L. 108-364, Sec. 3, 2004.)

Services/Programs

GSAT Demonstration & Resource Center

GSAT is a center, available to the community, where visitors can visit, learn, and make an informative decision in selecting the best AT to meet their needs.

- AT Device Demonstrations
- Equipment Displays
- Annual Assistive Technology Conference & Fair

AT Device 30-day Lending Library

One benefit of the GSAT center is that it allows the community an opportunity to test and actually try any device available at the center. In addition, items can be taken home, to school, or even to the workplace for a 30-day period, free of charge.

- Information and Referral
- Training on AT Devices & Software
- Database Library of Products & Services

AT Recycling & Equipment Exchange

GSAT, with the help of community partners, attempts to repair and refurbish old or used AT devices which are later available to the community for purchase.

- Collection of used AT equipment
- Listing of AT devices for sale or exchange

Alternative Funding Programs

GSAT's loan programs, provide the community a means to purchase AT or pursue home-based employment.

- Low interest rates and flexible payment terms
- No credit history required

Alternative Funding Programs (Cont.)

Guam Options for Alternative Loans- Assistive Technology (GOAL-AT)



GOAL-AT is a federally funded program that provides affordable financial loans to persons with disabilities for the purchase of assistive technology devices and services.

Examples of assistive technology include:

- Hearing aids/assistive listening devices
- Wheelchairs/scooters
- Braille note-takers
- Ramps/home modifications
- Lifts/carriers for vehicles
- Computer adaptations
- Communication devices

Get Guam Teleworking (GGT) Loan Program



GGT is also a federally funded program that offers affordable financial loans to help individuals with disabilities purchase equipment in order to "Telework." *

Equipment may include, but is not limited to:

- Computers, printers and related peripherals
- Home modifications for accessibility and/ or to create home offices

* Telework" is defined as paid employment that is regularly performed at a place other than the employer's office or place.